

DOMESTIA

la domotique à portée de main



DRW-001-001

Mode d'emploi

Router Wifi DRW-001-001

Module "**DRW-001-001**" is a pocket WI-FI router. It is specially configured to be connected directly to our supplementary management unit (DME-LAN-002) and can be programmed for Wi-Fi before having Internet access.

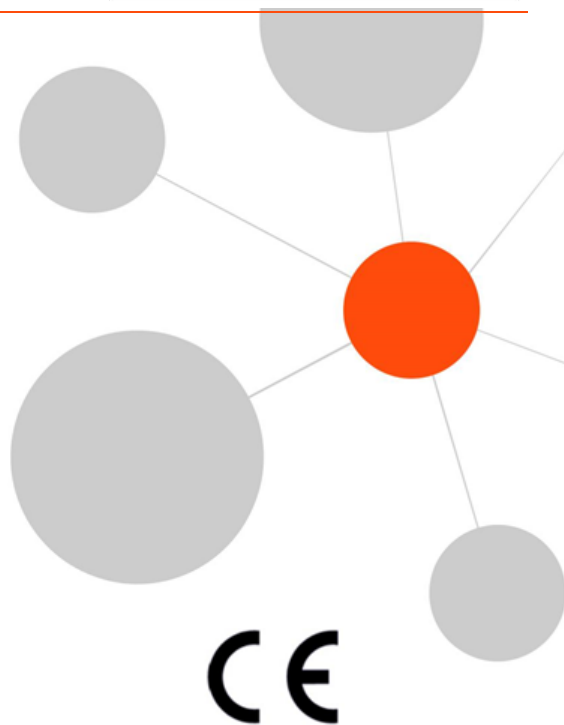
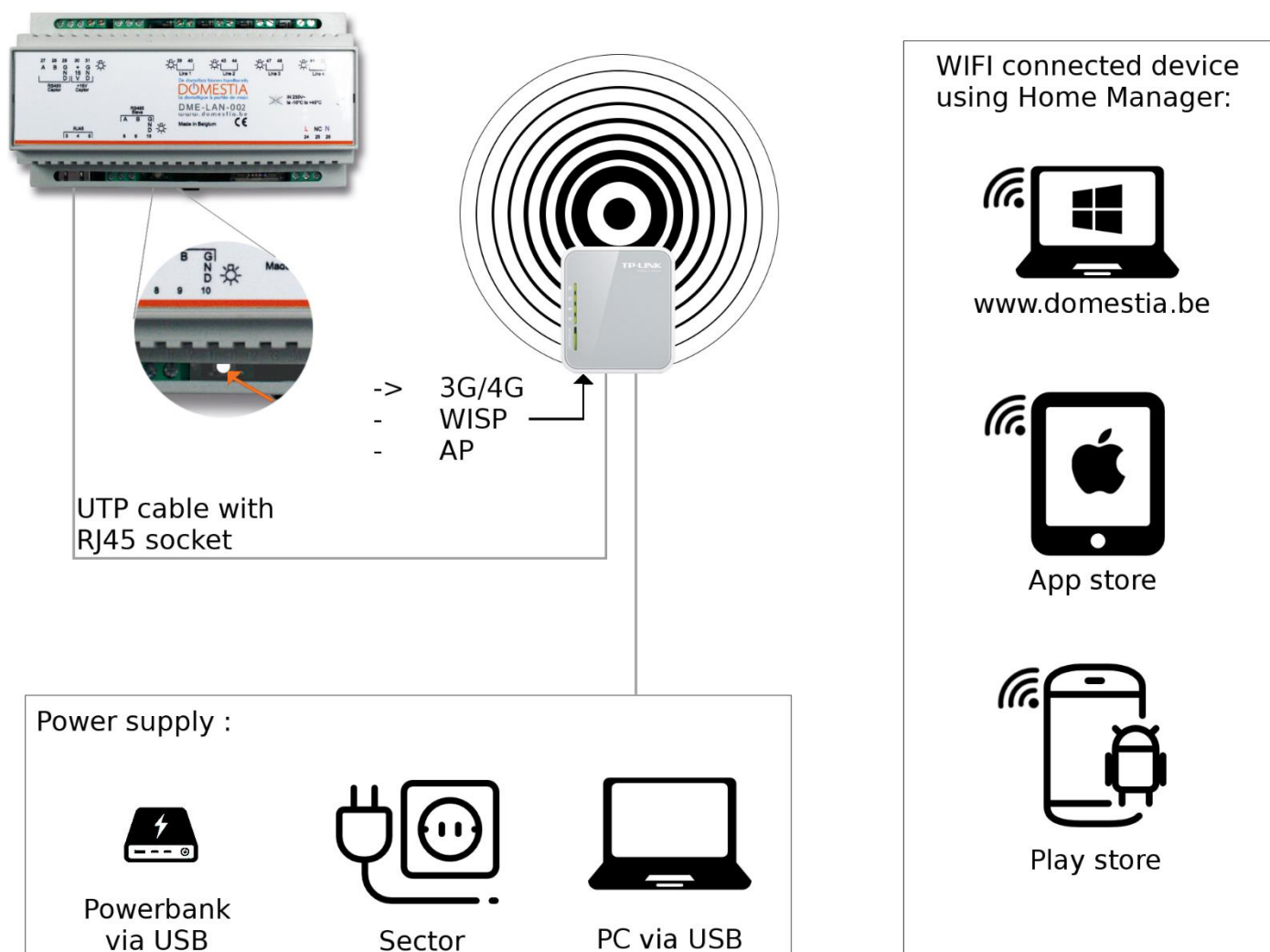
Ultra compact and equipped with a mini USB port, this router can also be powered using a laptop, an AC adapter or a Power Bank (1A)

Connecting your **DME-LAN-002** to the DRW-001-001 router:

- Connect as shown in the diagram below.
- Check that the switch is set to "3G/4G" mode.
- Connect your device (tablet/phone/computer) via Wi-Fi to the network indicated on the router label (SSID: "TP-LINK_...").
- Enter the password indicated on the router label. (Key: "*****").
- Launch Home Manager [here](#) (see Other Section) and in Settings, click on the magnifying glass to check for the presence of the management unit (DME-LAN-002) on the network.
- The drop-down list shows the DME-LAN available (connected to the network).

- If you are unable to connect, check your connection by going to your management unit's local page (DME-LAN-002) from your web browser (IP address: 192.168.1.210 or 192.168.0.210).
 - o If the page opens, you can close then launch Home Manager again.
 - o Otherwise, check that you are connected to the Wi-Fi "TP-LINK_..." and restart your management unit (DME-LAN-002) using the small white button on the side of the terminal ABGND "RS485 Slave"; one of the two devices is probably not connected properly.
 - o

Router connection diagram - Wifi DRW-001-001





Domestia

Rue Hector Denis 114 4420 Montegnée
Tél : 04/ 372 07 16 Fax : 04/ 372 07 19
info@domestia.be

www.domestia.be